

bond

• THE SR&ED EXPERTS •



Proudly Canadian  
Owned & Operated

# Getting to Know Bond

# Table of Contents

---

p. 3	<b>Message from the President</b>
p. 4	<b>Our Story</b>
p. 5	<b>Our Team</b>
p. 8	<b>Core Service</b>
p. 9	<b>Additional Services</b>
p. 10	<b>Our Process</b>
p. 11	<b>Our Brands</b>
p. 12	<b>I: Medical Specialties</b>
p. 13	<b>II: Agriculture</b>
p. 14	<b>III: Industrial</b>
p. 15	<b>IV: Technology &amp; IT</b>
p. 16	<b>V: Food Developers</b>
p. 17	<b>Video Testimonials</b>
p. 19	<b>Contact Us</b>
p. 20	<b>SR&amp;ED Brochures</b>
p. 21	<b>Resources</b>



# Message from the President

---

*It is my pleasure to invite you to explore your SR&ED journey with Bond Consulting Group.*

*Since early 2005, it has been my goal to operate a firm that delivers the most sophisticated solution to SR&ED claimants. I am proud of our effective 100% success rate on over 3000 SR&ED applications over the past 20 years.*

*We do things differently at Bond. We only hire top talent. Your case will be managed by a highly qualified SR&ED Analyst plus a diverse team of dedicated SR&ED managers.*

*We will take the time to understand your case. We will provide you with our revolutionary SR&ED Evidence Management tool, SR&ED Proof. We will defend your case if selected for audit. And most importantly, we will do everything to ensure that you have the best possible experience, and of course, obtain that all-important SR&ED approval.*

*I look forward to working with you and your company.*



**Julie Bond, The SR&ED Whisperer  
CEO & President**



Julie is one of the top SR&ED policy experts in the country with over two decades of experience in this sector. Julie has personally prepared or supervised well over 3000+ successful SR&ED applications.

Julie's first university degree was a mixed Bachelor of Arts in Astrophysics and Foreign Languages, from the University of Toronto.

Julie's second university degree was an Executive MBA from the Rotman School of Management, part of the University of Toronto.

# Our Story

---



Founded in 2005, Bond Consulting Group offers the most sophisticated and comprehensive SR&ED Solution in Canada. We are proud of our very high success rate, almost everything we've prepared over the years has been accepted, the vast majority accepted as filed with no requests from CRA.

**We have presided over thousands of successful SR&ED applications resulting in over \$200 million in refunds for our clients and counting.**



**RBC Canadian Women Entrepreneur of the Year**, in the start-up category (2009)  
**Canada's Emerging Growth Companies**, Profit Hot 50 (2008, 2009)  
**Canada's Top Women Entrepreneurs**, Profit W100 (2010)



Bond Consulting Group is conveniently located in Toronto, and we serve clients across Canada.

# Our Team

---

At Bond Consulting Group, we operate with a fully integrated in-house team that supports every stage of the SR&ED process.

Each department plays a critical role in ensuring accuracy, compliance, and an exceptional client experience.

## **Analyst & Scientific Team**

---

Bond employs a large diverse team of SR&ED Analysts, including Medical Specialists, Technologists, and Engineers on staff, versed in a wide range of scientific, medical, technological, and engineering sectors. When we assign a consultant to your case, he or she will be well-positioned to understand your technology, science, medicine, and business.

### **Senior Bond Partner, SR&ED Medical Analyst,**

MD, St. George's School of Medicine(2011)

B.Sc. (Hon), York University (2005)

### **Senior Bond Partner, SR&ED IT & Applied Mathematics Analyst,**

M.Sc., Mathematics, University of Western Ontario (2020)

B.SC. (Hon), Mathematics, University of Alberta (2018)

### **Bond Partner, SR&ED Medical Analyst**

B.Sc in Pharmacy & Pharmaceutical Sciences, University of Alberta (2015)

### **Bond Partner, SR&ED Medical Analyst**

M.Sc. Medical Sciences , McMaster University (2021)

B.Sc. Life Sciences (Hon), University of Waterloo (2019)

### **Bond Partner, SR&ED Multi-Disciplinary Analyst**

B.A., Visual Arts & Communications, Brock University (2013)

### **Senior Bond Associate, SR&ED Agriculture & Multi-disciplinary Analyst**

Bachelors Environment, Resource and Sustainability, University of Waterloo , 2021

### **Bond Associate, SR&ED Medical Analyst**

M.Sc Physiology & Pharmacology, University of Western Ontario.

### **SR&ED Medical Analyst**

B.Sc in Nursing, Minor in Sociology, Toronto Metropolitan University (2022)

### **SR&ED Medical Analyst**

Ph.D. Laboratory Medicine and Pathobiology, University of Toronto, 2021

M.Sc. Biomedical Sciences, University of Guelph, 2013

B.Sc. Biomedical Sciences, University of Guelph, 2010

### **SR&ED Medical Analyst**

Ph.D., Integrated Molecular Physiology, York University, 2024

M.Sc., Integrated Molecular Physiology, University of Guelph, 2019

B.Sc. (Honours), Biological Sciences (Minor in Nutrition and Nutraceutical Sciences), University of Guelph, 2018

### **SR&ED Medical Analyst**

M.Sc in Medical Sciences, University of Toronto- Institute of Medical Science (2025)

B.Sc in Biomedical Sciences, University of Waterloo (2023)

### **SR&ED Industrial Analyst**

M.Eng, Biomedical Engineering, University of Toronto (2021)

B.Eng, Electrical & Biomedical Engineering, McMaster University (2020)

## **Management**

Bond's Management is dedicated to ensuring the success and approval of the SR&ED claims for our clients.

- **Managing Director (Administration & Operations)**
- **Office Manager**

## **Department Support**

Bond's Department Support Team provides structured guidance and compliance assistance to Bond analysts and clients.

- **Department Manager**
- **Department Coordinator**
- **Department Assistant**
- **SR&ED Evidence & Audit Coordinator**

## **Sales & Marketing Team**

Bond's Sales and Marketing Team is dedicated to providing SR&ED eligibility assessments to our clients and facilitating marketing initiatives.

- **Account Executive**
- **SR&ED Assessment Specialist**
- **SR&ED Assessment Specialist**
- **Marketing Coordinator**
- **Campaign Coordinator**

## **Admin Support**

Bond's Admin Support Team streamlines organizational processes, and ensures strategic communication with Bond clients.

- **Senior Bookkeeper & Administrator**
- **Assistant Bookkeeper**
- **HR Coordinator & Recruiter**
- **Communications Coordinator**
- **IT Administrator/Project Coordinator**

# Core Service

**SR&ED is the largest and most important tax incentive program in Canada.**

SR&ED (Scientific Research & Experimental Development) is the government program that rewards companies that perform R&D in Canada. The program makes Canada a more economically competitive and technologically advanced nation and it has been in existence since the 80's. The Canadian incentive program is one of the most generous R&D programs in the world. **This is not a grant – if you qualify, you are entitled to this money under the Income Tax Act.**

**If you answer yes to any of the following questions you could be sitting on an untapped refund.**

## Scientific Research

- Is your practice incorporated? Do you have a BN?
- Do you practice in a field of medical or scientific specialty?
- Have you ever or would you like to define hypotheses and study clinical data in your field of medicine or science?
- Has your work resulted in advancement of knowledge in a field of science or medicine?
- Have you ever published in medical or academic journals?

## Experimental Development

- Have you encountered technological obstacles or uncertainties in the course of your work?
- Have you designed or built any prototypes or custom assets?
- Have you designed or developed any technology that is state-of-the-art?
- Have you solved technological problems by going beyond available practices, methods or routine engineering?
- Have you developed any products that were patented?

**There are only 3 criteria for eligibility plus evidence:**

- Scientific or medical uncertainty
- Scientific or medical advancement
- Systematic investigation
- Technical content and evidence

**There are only 3 criteria for eligibility plus evidence:**

- Technological obstacle
- Technological advancement
- Systematic investigation
- Technical content and evidence



# Additional Services

---



[sredrescue.ca](http://sredrescue.ca)

**Was your last SR&ED Audit a wreck?  
Bond can help you get back on track.**

- Consultation – we provide an opinion on eligibility
- Re-write and amend your SR&ED project descriptions
- Re-evaluate and amend your SR&ED claim
- Collect, organize and submit evidence to CRA
- Attend and represent at SR&ED audits
- Compose and submit SR&ED policy documents and evidence to Chief of Appeals
- Compose and submit SR&ED statement of claim and evidence to the Tax Court of Canada

# Our Process

---

Bond Consulting puts you on the right path to understanding Canada's most generous but most complicated corporate tax incentive program.

With our **talented analysts** on staff, **superior in-house expertise**, **government audit experience** and **sophisticated evidence tools**, you can't go wrong.



Initial consultation with an assessment specialist to determine your eligibility



Comprehensive technical interviews with your staff



Scientific report preparation



Detailed analysis of eligible costs



Preparation of all necessary tax forms and filings



Correspondence and reporting to your accountant



Post-preparation tracking of your claim



Regular consultations and strategic reviews



In case of desk audit, or on-site financial / technical audits, we will be right there with you to defend your claim

# Our Brands

---



[sredproof.ca](http://sredproof.ca)



[sredbank.ca](http://sredbank.ca)



[sredrescue.ca](http://sredrescue.ca)



[sreddoctors.ca](http://sreddoctors.ca)



[sredclinics.ca](http://sredclinics.ca)



[sredmanufacturing.ca](http://sredmanufacturing.ca)



[sredpharma.ca](http://sredpharma.ca)



[sredfood.ca](http://sredfood.ca)



[sredfarms.ca](http://sredfarms.ca)



[sred-it.ca](http://sred-it.ca)



[sredstartup.ca](http://sredstartup.ca)



[sredresearch.ca](http://sredresearch.ca)

# I : Medical Specialties

Most Medical Specialists qualify for the SR&ED Program



The SR&ED Experts

APPROVED



The SR&ED Experts

APPROVED



The SR&ED Experts

APPROVED



The SR&ED Experts

APPROVED



The SR&ED Experts

APPROVED



The SR&ED Experts

APPROVED

## Testimonial

*We've been working with Bond Consulting Group for almost 10 years now. Almost everything we've ever submitted has been accepted as filed, which is a great relief for us. The year that CRA did visit us, Bond was right there with us, to make sure we understood eligibility, and how to respond to CRAs questions. The SR&ED program is so important to us, and we couldn't do it without Bond Consulting.*

***Alijca Wojewnik, President, Dicentra, Natural Health Product Industry.***

# II : Agriculture

Many incorporated Farms qualify for the SR&ED Program



## Testimonial

*Our experience with Bond Consulting was fantastic. We had heard of SR&ED before, but the task of understanding the program seemed intimidating until we met with them. They made it easy for us to understand and relate to the program. And even though our transaction was small, Bond provided us with a substantial strategic review. The review allowed us to maximize our results with the program. We highly recommend Bond, for any business, large or small. Julie and her team of skilled analysts were professional. Their diligence to our case was evident. They responded to our questions in a timely manner. We are profoundly grateful for the awareness we attained over the past couple of years through Bond. Consistent and top tier; we highly recommend their services.*

**Vincent Sowa, The Meadmaker, *Backed By Bees*, Meadery**



# III : Industrial

## Many Manufacturers qualify for the SR&ED Program

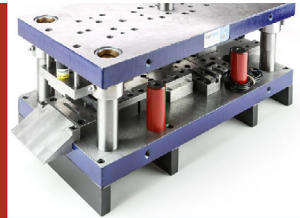
### Chemical Engineering SR&ED Claim Approved



The SR&ED Experts

APPROVED

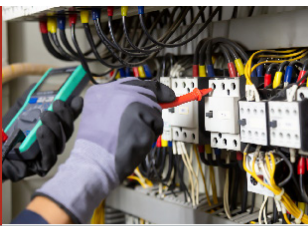
### Tool & Die SR&ED Claim Approved



The SR&ED Experts

APPROVED

### Electronic Engineering SR&ED Claim Approved



The SR&ED Experts

APPROVED

### Millwork and Cabinetry SR&ED Claim Approved



The SR&ED Experts

APPROVED

### Solid Surface Manufacturer SR&ED Claim Approved



The SR&ED Experts

APPROVED

### Stone & Tile SR&ED Approved



The SR&ED Experts

APPROVED

## Testimonial

*We made the mistake of leaving Bond Consulting Group once many years ago, thinking that we could save a bit of money. We'll never make that mistake again.*

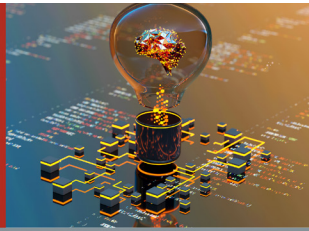
*Our SR&ED claim was denied in full, it was an awful experience. When it comes to dealing with CRA, Julie and her analysts never let us down, we know they're experts and will fight to the end for us.*

**Glen McCarthy, President, Labworks, Industrial Refrigeration Specialists**

# IV: Technology & IT

## Many Tech & IT Companies qualify for the SR&ED Program

**AI:  
Social Media Platform  
SR&ED Claim Approved**



The SR&ED Experts



**Android Application  
Developer  
SR&ED Claim Approved**



The SR&ED Experts



**Computer Sciences  
SR&ED Claim Approved**



The SR&ED Experts



**Software Engineering  
and Technology  
SR&ED Claim Approved**



The SR&ED Experts



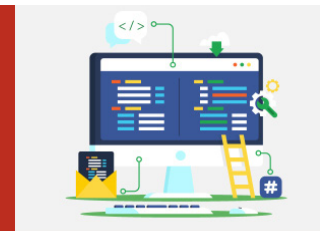
**Applied Mathematics  
SR&ED Claim Approved**



The SR&ED Experts



**IT Development  
Framework  
SR&ED Approved**



The SR&ED Experts



## Testimonial

Hiring Bond Consulting Group was the best SR&ED decision we've ever made. Julie and her team know the program like the back of their hands, and Julie is a veritable SR&ED guru. Our claim before Bond got denied and our consultant did not do much while we were left with having to do almost all the work. Bond was a refreshing change as their team of analysts jump in and do the heavy lifting. Bond has been with us every step of the way when CRA came to visit, and what a relief that was to us.

**Raffi Oshagan, President, Garo Consulting, Software Developers**

# V : Food Developers

Food & Beverage producers often qualify for the SR&ED Program



## Testimonial

*We really enjoyed working with Bond Consulting, their staff provided us with excellent guidance. They led us through the entire SR&ED process and were able to communicate equally well with all members of our team. After discussing our work and documentation with Bond Consulting over two meetings and a few emails they were able to prepare two successful SR&ED claims that were accepted as filed. Their expertise really became evident when they helped us maximize our claim through their proven strategy and knowledge of our industry. Bond Consulting was able to help us recoup valuable money that we are planning to reinvest in our company and product.*

**Kevin Snow, Co-Founder, *Snowman Brewing Co.*, Beverage Industry**



# Bond Client Testimonials



watch our testimonial with  
**Dr. Anastasia Oikonomou**

Cardiothoracic Radiologist,  
Sunnybrook HSC, Scarborough



watch our testimonial with  
**Dr. Shiva Jayaraman**

Pancreatic Surgeon,  
St. Joseph's Health, U of Toronto



watch our testimonial with  
**Dr. Carolyn Nessim**

Oncology Surgeon,  
Ottawa Hospital Research Institute



watch our testimonial with  
**Dr. Evan Lewis**

Pediatric Neurologist, Sick Kids,  
U of Toronto



watch our testimonial with  
**Dr. Maher Obeid**

Doctor of Chiropractic,  
The Healing Path



watch our testimonial with  
**Dave Cloutier**

CEO Kelvin Technologies



watch our testimonial with  
**Behrouz Hariri**

CEO Smart Nora



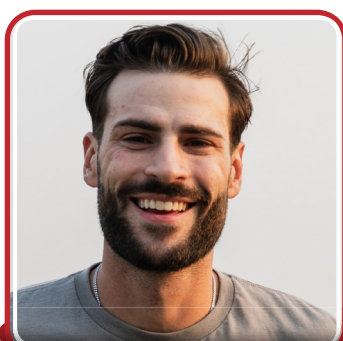
watch our testimonial with  
**Vincent Sowa**

Co-Founder Backed By Bees



watch our testimonial with  
**Jan VanderHout**

President of Fruit and Vegetable  
Growers of Canada



watch our testimonial with  
**Tyler Heppell**

Production Manager  
Heppell's Potato Corporation



watch our testimonial with  
**Dr. Shubhayan Sanatani**

Pediatric Cardiologist & Electrophysiologist  
BC Children's Hospital

# No Risk, No Brainer

---

If you do not receive a refund  
our services cost you nothing.



**Book a Consultation**

1-888-SRED-007  
416-503-4607

**Call Us**



**E-mail us**

## Stay Connected



[info@bondconsulting.ca](mailto:info@bondconsulting.ca)

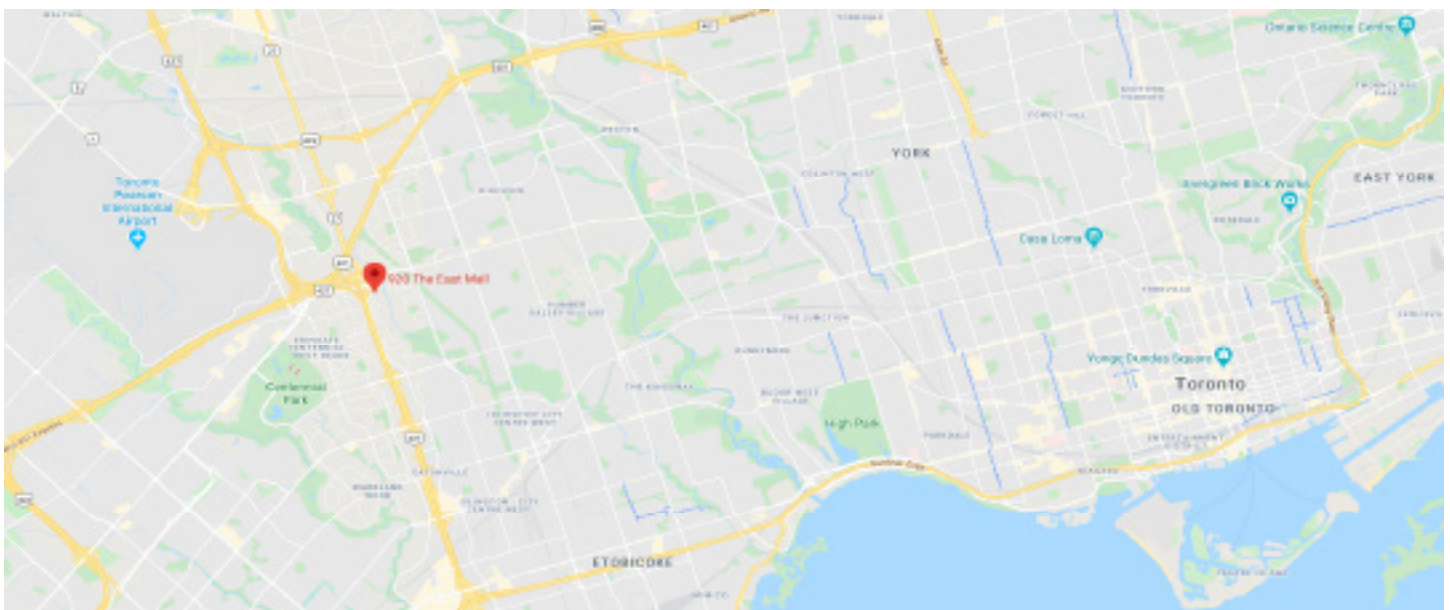
[www.bondconsulting.ca](http://www.bondconsulting.ca)

**Bond Consulting Group Inc.**

920 The East Mall

Toronto, Ontario

Canada, M9B 6K1



# SR&ED Brochures

*Visit*

*Download*

**SR&ED Clinics**

[sredclinics.ca](http://sredclinics.ca)

**Clinics brochure**

**SR&ED Doctors**

[sreddoctors.ca](http://sreddoctors.ca)

**Doctor brochure**

**SR&ED Farms**

[sredfarms.ca](http://sredfarms.ca)

**Farms brochure**

**SR&ED Food**

[sredfood.ca](http://sredfood.ca)

**Food brochure**

**SR&ED IT**

[sred-it.ca](http://sred-it.ca)

**IT brochure**

**SR&ED Manufacturing**

[sredmanufacturing.ca](http://sredmanufacturing.ca)

**Manufacturing brochure**

**SR&ED Pharma**

[sredpharma.ca](http://sredpharma.ca)

**Pharma brochure**

**SR&ED Research**

[sredresearch.ca](http://sredresearch.ca)

**Research brochure**

**SR&ED Start-up**

[sredstartup.ca](http://sredstartup.ca)

**Start-up brochure**

**SR&ED Rescue**

[sredrescue.ca](http://sredrescue.ca)

**Rescue brochure**

# Resources



[List of Eligible Industries](#)



[Video Learning Series](#)



[Official SR&ED website](#)



[SR&ED Q&A](#)



[Bond Blog](#)